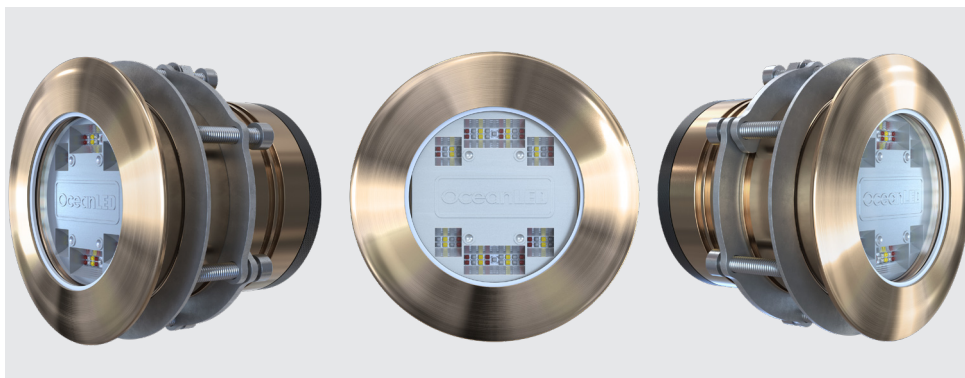


Explore E3 Colours DMX

EXCHANGEABLE FLUSH MOUNT UNDERWATER LIGHT



**3,500
Fixture
Lumens**



**Advanced
Optics**



**Ultra
Reliable**



**Easy
Install**



**Built-in
Driver**



**Full
Colour**



**Dynamic
Audio Mode
(Compatible)**



**Wave
Motion Mode
(Compatible)**

The Explore E3 Colours DMX takes underwater lighting to breathtaking new heights. This ultra-reliable exchangeable flush-mounted, full-colour underwater light, is capable of producing up to 3,500 fixture lumens. Constructed using the finest marine-grade aluminium bronze, and certified to IP69K for water ingress protection, the Explore E3 Colours DMX is the perfect choice for sport fishing vessels, leisure craft, and yachts. Benefiting from our signature optics, the Explore E3 creates a blade of light that cuts through the water in a way no other underwater lighting brand can match, the Explore E3 Colours DMX leads its class.

IDEAL FOR ALL TYPES OF VESSEL

Ideal for installation on all types of boat, the Explore E3 Colours DMX can be used for everything from yachts and day boats, to sport fishing and houseboats. Even boats left in the water for extended periods of time can benefit from Explore E3 Colours DMX lights. The state-of-the-art Tritonium coating protects our lights from underwater growth, allowing the owner or captain to simply wipe over the surface of the light, saving hours of scrubbing.

EASY INSTALLATION. SURFACE MOUNTED.

Thanks to its flush-mounted installation, the Explore E3 Colours DMX is the perfect solution for lighting the sides of your vessel and creating that halo effect. With isolation mounting kits available for wood, GRP and metal hulls, the Explore E3 is truly universal. The additional ability to maintain and replace light cartridges without the need to haul the vessel out of the water, via easy rear access, makes the Explore E3 the ideal solution for vessels that rarely come out of the water.

UNRIVALLED QUALITY. TESTED TO IP69K.

The Explore E3 Colours DMX light has been rigorously tested to IP69K, the highest protection standard available for water ingress, to ensure your complete peace of mind. The forged marine-grade aluminum bronze housing and specialist toughed colourless glass, provide an extremely tough outer surface. The addition of twin seals means the Explore E3 Colours DMX is one of the most robust and long-lasting underwater lights available anywhere.

INTELLIGENT LIGHTING COMMANDS

The powerful, digitally enhanced internal microcontroller ensures high-speed efficiency and fast transient response. Built-in active thermal control (ATC) means you never have to worry about overheating. The light will automatically manage its own output and throttle-back as needed, to protect the LEDs.

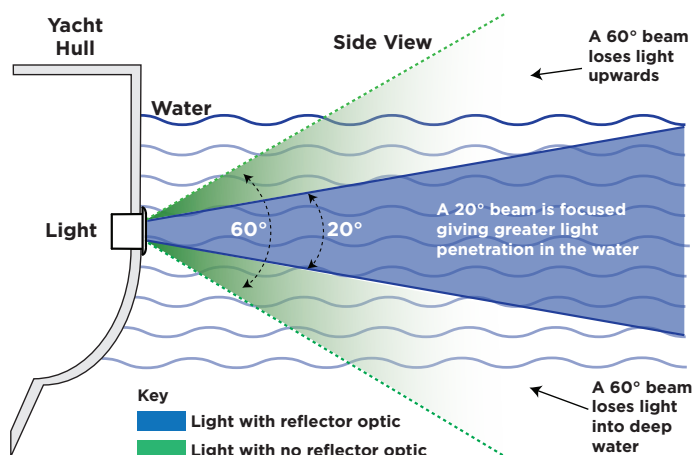


IP69K CERTIFICATION

To achieve the IP69K rating, a piece of equipment must go through a rigorous water intrusion test. The product is placed on a turntable that rotates five times a minute. It's sprayed at 80 to 100 bar/1,160 to 1,450 PSI, in phases of 14 to 16 l/min, and at temperatures up to 176°F/80°C.

BESPOKE UNDERWATER OPTICS

The Explore E3 Colours DMX light benefits from our signature underwater optics, specifically designed by our in-house team of expert engineers to supercharge a light's performance. With advanced light angling technology, our optics focus the light to create a blade effect, that cuts through the water in a way no other underwater light brand can match. The result is a light which uses far less power than its counterparts, whilst creating a superior effect. .



YOUR SYSTEM:



EXPLORE E3 COLOURS DMX

Product Code: E3009CD
Full Colour DMX
Exchangeable Flush Mount



CONNECT POWER & FUSE KIT

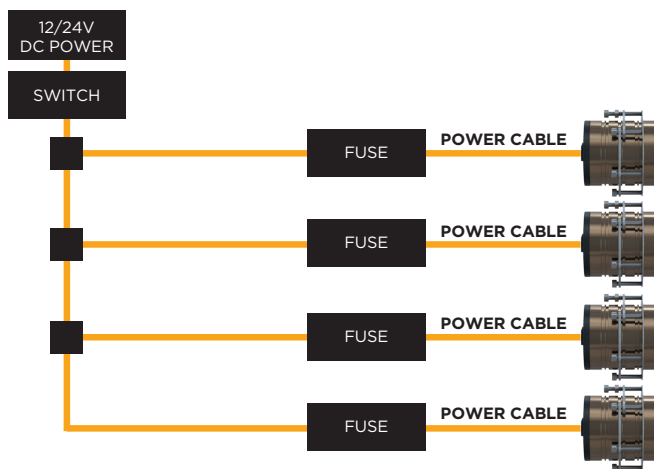


Fuse Kit
(Included with all models)

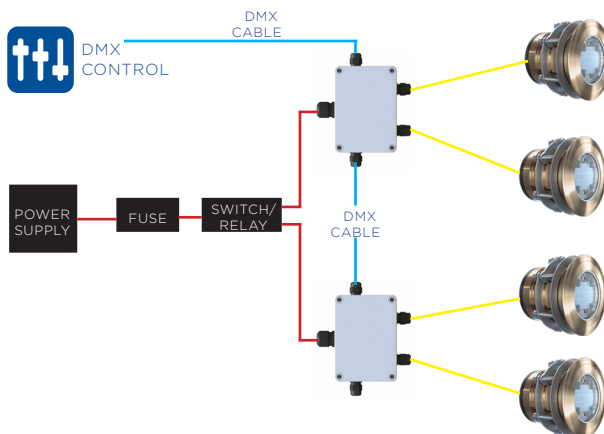


#013205
2-Way DMX Junction Box
(Optional: For DMX control only.)

SWITCH CONTROL / WIRING SCHEMATIC:



DMX CONTROL / WIRING SCHEMATIC:



LIGHT CONTROL

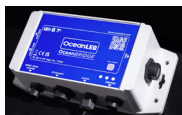
Option 1:

3rd Party switch Input
Toggle the switch on and off to change colour and mode.
See installation manual



Option 2:

OceanBridge
#013201
• OceanBridge Unit



Option 3:

OceanDMX RC Kit
See Guide for detail
• OceanDMX RC Remote
• OceanDMX RC Receiver



MODE & FUNCTION CAPABILITIES:



Static



Strobe



Audio Sync*



Cycle*



Sweep*



Movement-to-Colour*

*Controller dependent

IMPORTANT FEATURES

- **Full RGBW:** Universal colour selection and blending functionality when using the OceanBridge or OceanDMX RC Controller.

- **Active Thermal Control:** ATC prevents overheating. The intelligent internal driver reduces throttles back the lights brightness to protect the LEDs from overheating and causing damage.

MOUNTING RECOMMENDATIONS: TECHNICAL INFORMATION:

- Boat Size: Up to 98' (30m)
- Hull Spacing: 2ft-4ft
- Transom Quantity: 2-6 lights
- Install Depth: 10-12" (25-30cm) Below the waterline

BOX CONTENTS:

- Explore E3 Colours DMX (Part: E3009CD) (Includes Cable)
- Removal Tool
- Fuse Kit
- Quick Install Guide

WARRENTY:

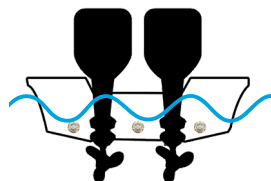
- Two Years

Water Protection Rating	IP69K	Fixture Lumens	3,500
Current/Power Consumption	12V DC 5.5A 24V DC 2.4A	Material (Mounting Tube)	Aluminium Bronze
Min/Max Operating Voltage	9-32V DC	LED Life Expectancy	40,000+ Hours
Driver Type	Internal	Operating Temperature	-10°C to 50°C ambient
Beam Angle	90°x 20° Blade	No of LEDs	66
PHYSICAL			
Weight	1.2kg (2.65lbs)	Hole Cut-Out	3.25" (83mm)
Cable Length	1.8m	Material (Light Body)	Aluminium
Footprint	6.55" (170mm)		

TRANSOM PLACEMENT:

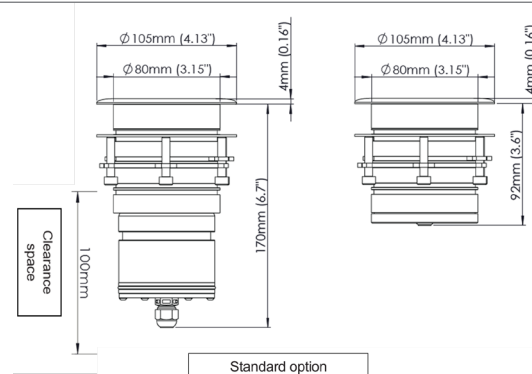
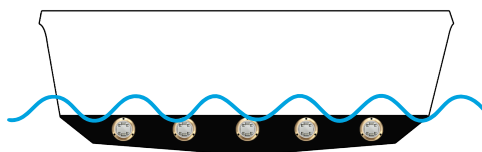
Small Boats (Outboard)

Example placement with twin outboard engines.



Larger Boats (Inboard)

Example placement for larger boats with inboard engines.



ACCESSORIES:

OPTIONAL JUNCTION BOXES	
Item	Part
2-Way DMX Junction Box	013205

OPTIONAL ISOLATION KIT	
Item	Part
Delrin Sleeve (Isolation Kit)	001-500638

OPTIONAL CONTROLLERS	
Item	Part
OceanBridge Multizone Lighting Controller	013201
OceanDMX RC Sport/E3 Colours 915	013032
OceanDMX RC Sport/E3 Colours 868	013033

IMPORTANT NOTES:

Maintenance – Use a sponge or nylon brush with soap and water to clean your lights. A flexible straightedge may be used to remove growth on the lens or bezel if required. Do not use a jet wash on your lights.

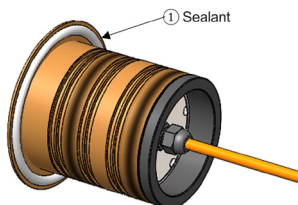
Installation – All information provided in the installation manual represent normal installation instruction and is provided as guidance only. Please contact OceanLED for advice if you wish to install outside these parameters.

Disclaimer – OceanLED has taken care to ensure that the information provided in the literature is correct and up to date. However, it is not intended to form any part of a contract or provide a guarantee. Purchasers/ intending purchasers should contact OceanLED to check whether there have been any changes to the information since the publication of the literature. **Please ensure you have read the full installation guide before fitting this product.**

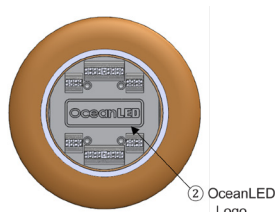
INSTALLATION (QUICK START GUIDE):

1. Test light(s) before fitting.

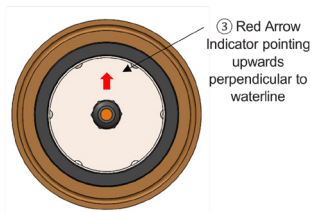
2. (1) Apply a generous amount of sealant to the rear of the mounting tube assembly's bezel to ensure a complete unbroken seal around the light. Make sure sealant fills in the recess groove on the reverse of the light bezel. There should be a continuous and unbroken bead of sealant.



3. To ensure the correct light orientation, position the light with the red arrow sticker (3) on the rear lid pointing up, perpendicular to the waterline. When viewing from the front, make sure the OceanLED logo (2) remains horizontal with the waterline.

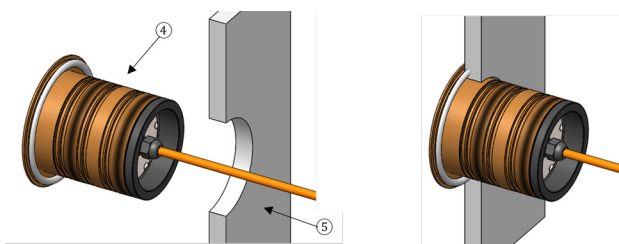


E3 Colours DMX Front View

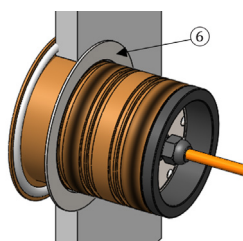


E3 Colours DMX Rear View

4. Feed the light cable through the hole in the hull and insert the complete light unit (4) (mounting tube assembly + light cartridge) into the hull, pressing the light hard into the hull (5) and twisting slightly to spread the sealant behind the light to ensure good adhesion.

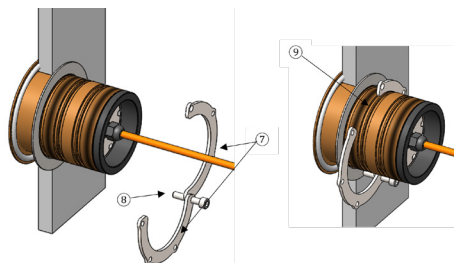


5. Insert the stainless-steel compression washer (6) over the mounting tube.

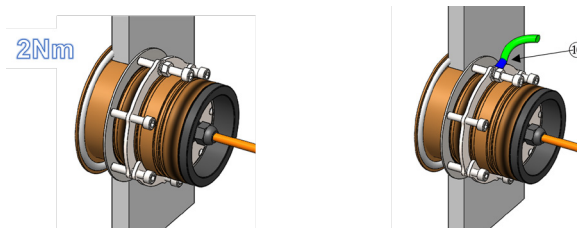


FOR FULL INSTALLATION INSTRUCTIONS, SEE THE INSTALLATION MANUAL.

6. Take the two Clamping Clips (7) and align them to form a circle, ensuring that you pair one threaded hole with one non-threaded hole. Use one of the provided screws (8) to secure the clips together, positioning them approximately halfway down the length of the screw. Insert the clips into the appropriate grooves on the outside of the mounting tube (9). Make sure the end of the screw is close to the washer. Use the remaining screws to fix the two clips together. Use the longer screw to connect the light to the vessel's cathodic protection system.



7. Use a 5mm Allen key to tighten the locking screws, ensuring that you apply thread lock at the point where the threads make contact with the locking ring. Attach the bonding cable (10) to the remaining screw and secure



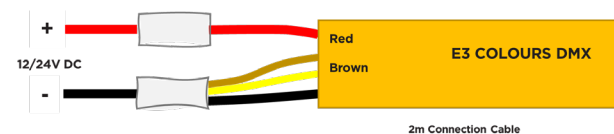
8. ELECTRICAL INSTALLATION:

Connecting light/s to your DC Power Source

OceanLED Explore models require a 12 or 24V DC supply. This supply should be a minimum of 6A @12V or 3A @ 24V DC per light.

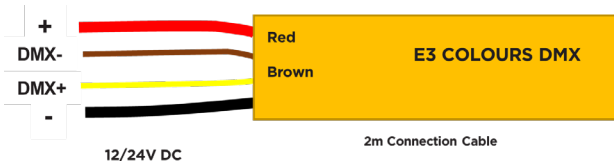
E3 DMX Colours operated by switch

To use in DC switched mode; connect DC power +Ve to the RED wire, and DC power -Ve to the BLACK, BROWN & YELLOW wires



E3 DMX Colours operated by DMX controller

Consult full installation manual for connection method. This light requires a 2-way DMX Junction Box for efficient distribution of power and the DMX signal.



SUSTAINABILITY

OceanLED is committed to a sustainable future. Through constant product and design innovation, establishing better working practices, and evaluating our supply chains, we are able to take measurable steps to creating true sustainability in our business.