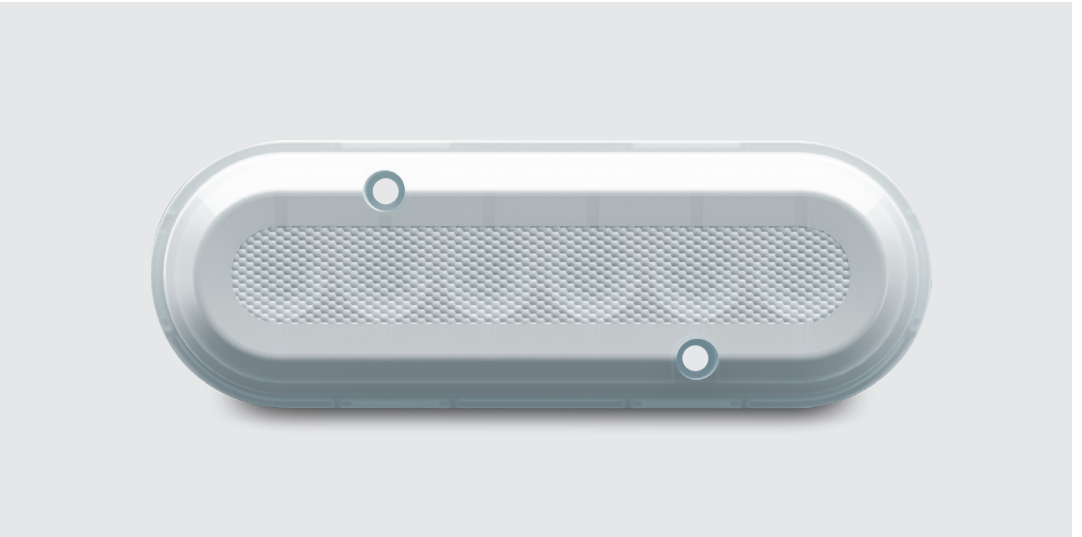




M6 GEN2 MAST SERIES

SURFACE MOUNT



The M6 Gen2 Mast Series Light from OceanLED is perfect for illuminating your rigging.

KEY FEATURES



Up To 660
Fixture Lumens



38°
Top Beam



38°
Side Beam



Circular
Beam

AVAILABLE COLOURS



Ultra White
011203W



Warm White
011204WW

The new M6 Gen2 Mast Series light from OceanLED is 50% brighter than its previous model with an improved design. The narrow beam angle helps focus the powerful LEDs, enhancing the natural beauty of your vessel, making it perfect for illuminating your rigging.

Suitable for aluminium, steel and composite rigs on all sizes of boats ranging from sportfishing to larger yachts.

Easy to install, sturdy, weatherproof and exceptionally easy to maintain. Ultra low power draw, reverse polarity protection

- Always find your boat when moored
- Eliminate poorly lit areas
- Enhance the lines of your boat at night
- Circular beam gives large deck footprint
- 10 meter cable for running down masts
- Same footprint as earlier models
- Chemically resistant polymer

FOCUSED, NARROW BEAM ANGLE

38° focused, narrow beam to illuminate your spreaders, beams and rigging.

COMPACT AND SIMPLE DESIGN

Made from a chemically resistant optical polymer with a built in driver. Slender design is perfect for mounting on narrow spreaders and beams.

SIMPLE TO INSTALL

Installation needs only a small, 1/2" hole in the hull to feed the cable through and 2 screws to hold in place. No bonding required.

EASY TO CLEAN

Thanks to its Tritonium coating, a simple wipe of the lens removes any dirt saving hours of scrubbing each time you use it.

ACTIVE THERMAL CONTROL

ATC prevents overheating. In the event of overheating the ATC system will reduce the LED power level in order to protect the LEDs, or in extreme cases, turn off the fixture completely.

M6 Gen2

BOX CONTENTS

M6 Light and Cable

In-line Fuse Kit

Mounting Screws

Quick Install Guide

ACCESSORIES

PART

4 Way V DC Power Junction Box

019901

TECHNICAL

Lumens

970

Fixture Lumens*

660

Typical LED life expectancy

40,000+ Hours

Minimum-Maximum operating voltage DC

9-32V DC

Current / Amp draw (DC)

0.45A @ 12V DC
0.22A @ 24V DC

Driver type

Internal, Reverse
Polarity Protected

PHYSICAL

Total weight

460g (1.01 lbs)

Cable length

32.8" (10m)

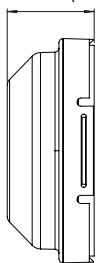
Hole cut-out for cable entry

1/2" (12.5mm)

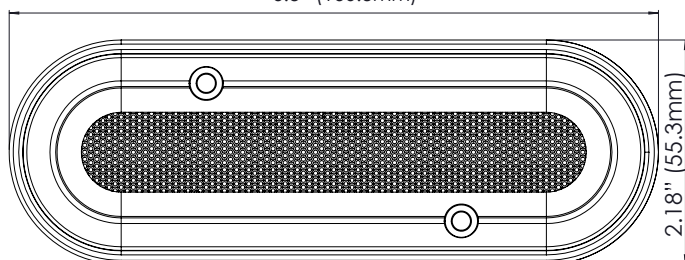
Material

Chemically resistant
optical polymer

0.84" (21.5mm)



6.3" (160.3mm)



2.18" (55.3mm)

*Fixture Lumens rating is a measurement of total light output from a finished lighting fixture. This measurement can only be obtained from either a Goniophotometer or an Integrating sphere. Fixture Lumens is the most reliable, professional measurement of light output. OceanLED has heavily invested in these measurement apparatus and has had all its data verified by the Lighting Association of Great Britain.