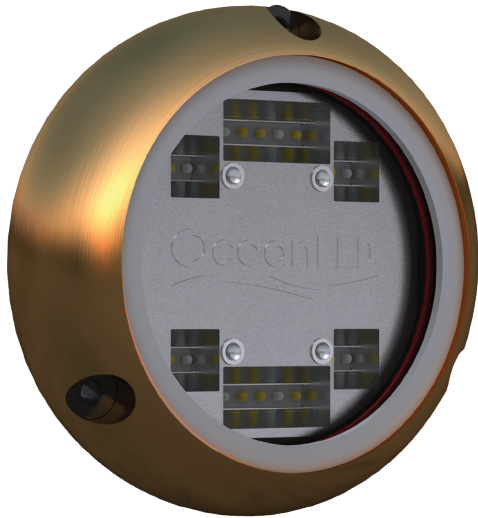


OceanLED

Sport S3124s



Key Features



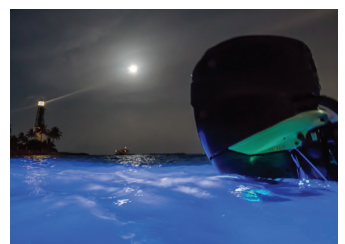
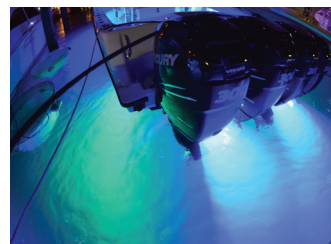
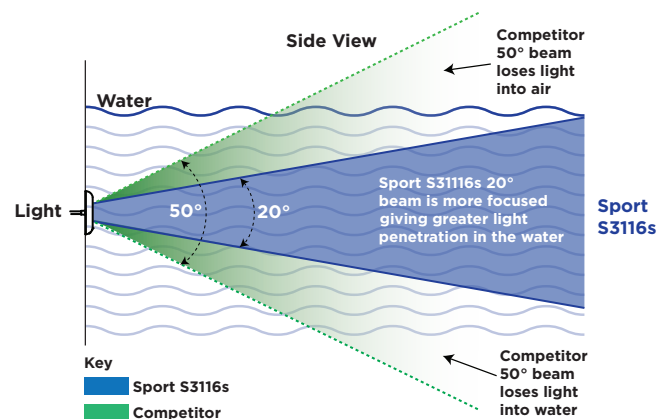
Available Colours



The OceanLED Sport series is the perfect choice for fishing and cruising in small to medium sized boats.

Advanced optics, designed exclusively by OceanLED create an optically efficient 90° surface beam angle with a focused 20° side beam displaying a striking amount of water penetration and a significantly larger illuminated area. With twice the amount of LEDs as its competitors, the dual colour S3124s is the leader in its class. Simply toggle the power between white, blue, strobe and fade modes.

- **Twice the amount LEDs than its competitors, illuminating a significantly larger area.**
- **60% narrower focused side beam angle providing greater water penetration.**
- **True 90° beam angle with no fading at the edge gives better illumination.**



- **90°/20° Beam Angle**

A true wide-angled, focused beam lights up a large area of the water.

- **Compact and simple design**

Made from corrosion resistant Alu Bronze, there is a lot packed into this 10cm light.

- **Simple to install**

12mm hole in the hull to feed the cable through and 3 screws in place. No bonding required.

- **Easy to clean**

Thanks to its Tritonium coating, a simple wipe of the lens removes any underwater growth saving hours of scrubbing each time you use it.

- **Fish-Strobe Mode**

Exceptionally bright, randomised strobing of the light is proven to attract more fish and catch more bait.

- **Fade Mode**

Fades smoothly between midnight blue and ultra white.

Technical Specifications

Mounting Recommendations	S3124s
Boat size	up to 65' (20m)
Transom / Hull spacing	2-4' (0.5-1.2m)
Transom quantity	2-6
Installation depth (to top of fixture)	8-10" (20-25cm)
Technical	
Typical LED life expectancy	40,000+ Hours
Minimum-Maximum operating voltage DC	9-32V DC
Current / Amp draw (DC)	12V DC 3.6A 24V DC 1.7A
Approx. light penetration (avg. water quality)	TBC
Approx. Light penetration (perfect water quality)	TBC
Driver type	Internal
Physical	
Total weight	0.70kg
Extension cable length (standard)	9 ⁷ / ₆₄ " (3m)
Hole cut-out for cable entry	1/2" (12.5mm)
Material	AB2 Aluminium Bronze
Accessories	Part#
NEW 4 Way V DC Power Junction Box	019901

*Fixture Lumens rating is a measurement of total light output from a finished lighting fixture. This measurement can only be obtained from either a Goniophotometer or an Integrating sphere. Fixture Lumens is the most reliable, professional measurement of light output. OceanLED has heavily invested in these measurement apparatus and has had all its data verified by the Lighting Association of Great Britain.

DISTRIBUTED BY:

