

**KEY FEATURES**



700\*  
 Fixture Lumens  
\* Ultra White measurement



Wide  
 Beam



Compact  
 Size



IP69k  
 IP69k  
 Protection

**COLOUR**



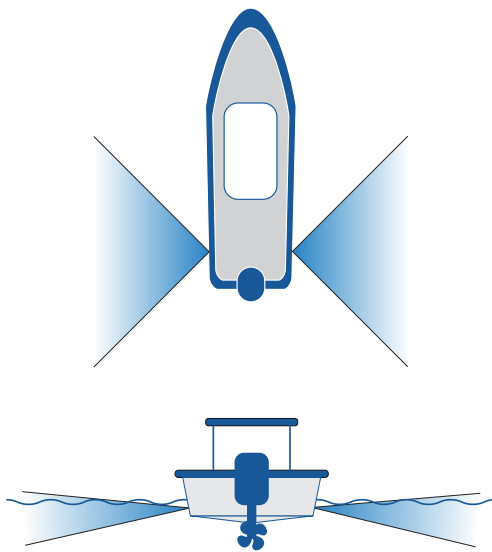
Midnight Blue



Ultra White

**WIDE BEAM 90° x 20° (ELLIPTICAL)**

With the wide angle beam, the D3 has the same signature in-water lighting effect as other larger lights from OceanLED, providing a wide-angled, focused top beam that lights up a large area of water, flooding it with light.

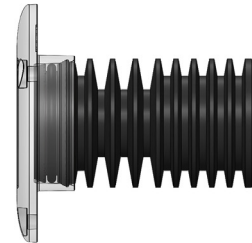


**IP69k PROTECTION**

The Discover D3 is rated at IP69k, the highest achievable rating of protection against water ingress. IP69k goes one step further than the industry standard IP68, giving you additional protection and peace of mind.

**TEMPORARY REAR SUBMERSION PROTECTION**

The rear of the light is protected from in-hull temporary submersion for boats where rough seas and waves sometimes flood the stern.



**COMPACT DESIGN**

The flush mount D3's compact dimensions make it ideal for tight fitting areas or smaller boats that want to discover the many benefits of underwater lighting. The D3 can be mounted with sealant and 3 screws to the hull, with only a 6mm low profile bezel that has no impact on speed or flow of water over the hull.

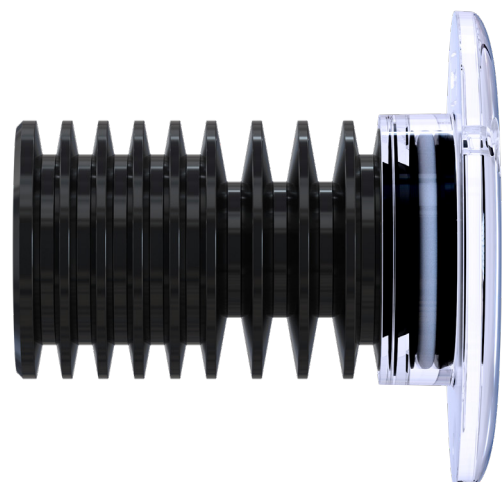
**NON CORROSIVE, NON CONDUCTIVE BEZEL**

The Discover D3 features a polymer front bezel that protects against corrosion as well as insulates against conductive hull types.



**ABOVE AND BELOW WATER MOUNTING**

The Discover D3 can also be used for deck or feature lighting above the water on your boat.



DISCOVER D3 CHOOSE YOUR LIGHT SETUP

OPERATION



CHOOSE YOUR EXPLORE E2 MODEL

#D3009W  
Discover D3 (Ultra White)  
• Light Assembly  
• Screws  
• Fuse Kit

#D3009B  
Discover D3 (Midnight Blue)  
• Light Assembly  
• Screws  
• Fuse Kit



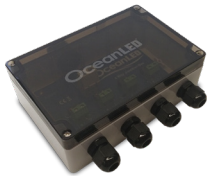
CONTROL VIA 3RD PARTY SWITCH

A 3rd party switch is required for operation.

Please see operation manual for full instructions

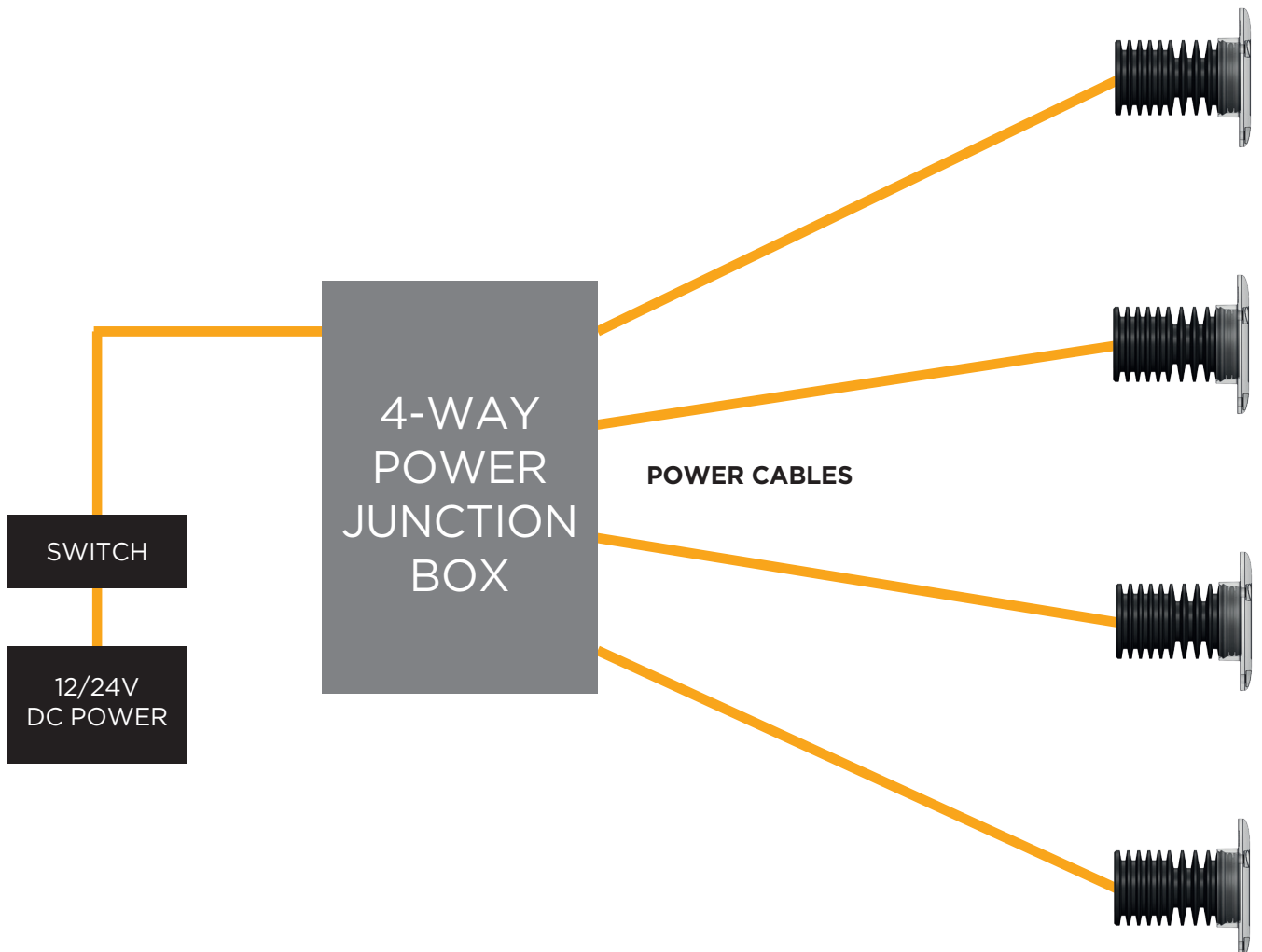


CONNECTION ACCESSORIES

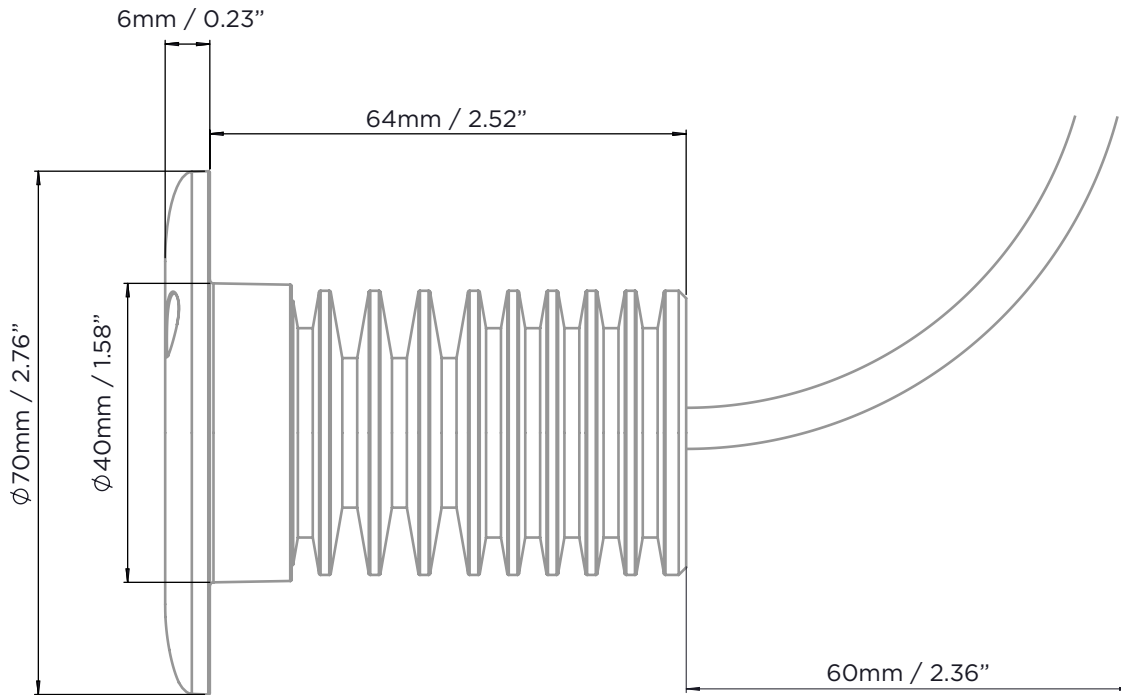


#019901  
OceanLED 4-Way Power Junction Box

WIRING SCHEMATIC WITH POWER JUNCTION BOX

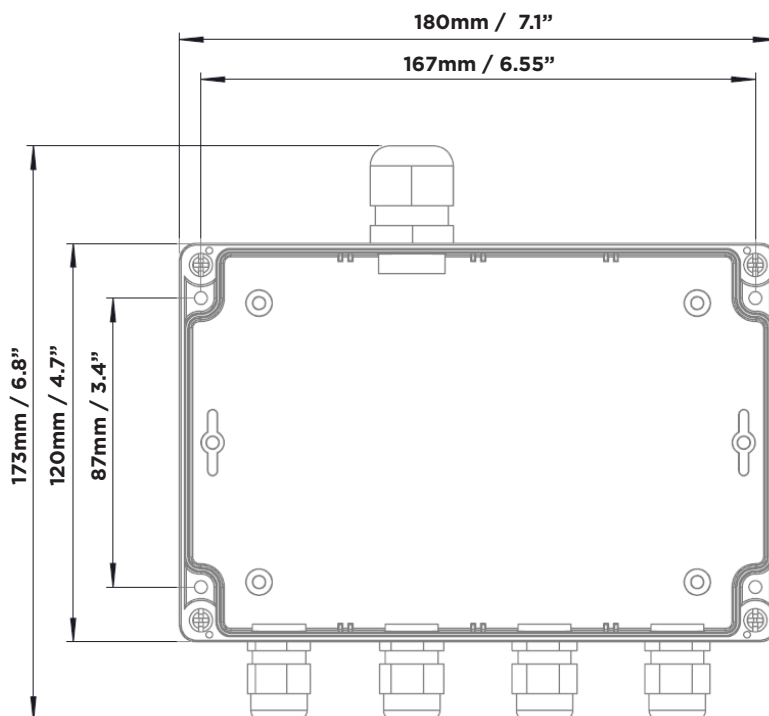


DISCOVER D3 DIMENSIONS



4-WAY POWER JUNCTION BOX ACCESSORY

Part Number	019901
Material / Colour	Polycarbonate
Weight	460g
IP Rating	IP66



**BOX CONTENTS**

Discover D3 Light Assembly & Screws
In-line Fuse Kit
Product Manual

**ACCESSORIES** **PART**

4 Way V DC Power Junction Box	019901
-------------------------------	--------

**MOUNTING RECOMMENDATIONS**

Boat size	Up to 10m (33')
Transom / Hull spacing	0.5 - 1.2m (2-4')
Installation depth below waterline	150-200mm
Maximum Recommended Hull Thickness	50mm (2")

**TECHNICAL**

Fixture Lumens (Ultra White)	700
Beam Angle	Elliptical 90° x 20°
Min-Max Operating voltage DC	10-30V DC
Current / Amp draw (12V DC)	0.7A@12V DC
Current / Amp draw (24V DC):	0.37A@24V DC
Correlated Colour Temp (White)	6500k
IP Rating (Front Face)	IP69k
Rear Temporary Submersion Protection	Yes
LED Manufacturer	CREE
Driver type	Internal

**PHYSICAL**

Total weight	150g (0.11lbs)
Total Diameter (Including Bezel)	70mm (2.76")
Diameter Of Body	40mm (1.57")
Profile Of Fixture	70mm (2.76")
Cable length	2m (79")
Hole Cut-Out	44mm (1.73")
Material (Bezel)	UV protected, anti corrosive polymer
Material (Light Body)	Hard Anodised Aluminium
Optics (Wide Beam Option)	Hybrid Collimated
CE Approved	Yes